

MONTHLY MEMBERSHIP PROGRESS REPORT

LOCATION MICHIGAN

District 11 B2

Results as of: 12/31/2022

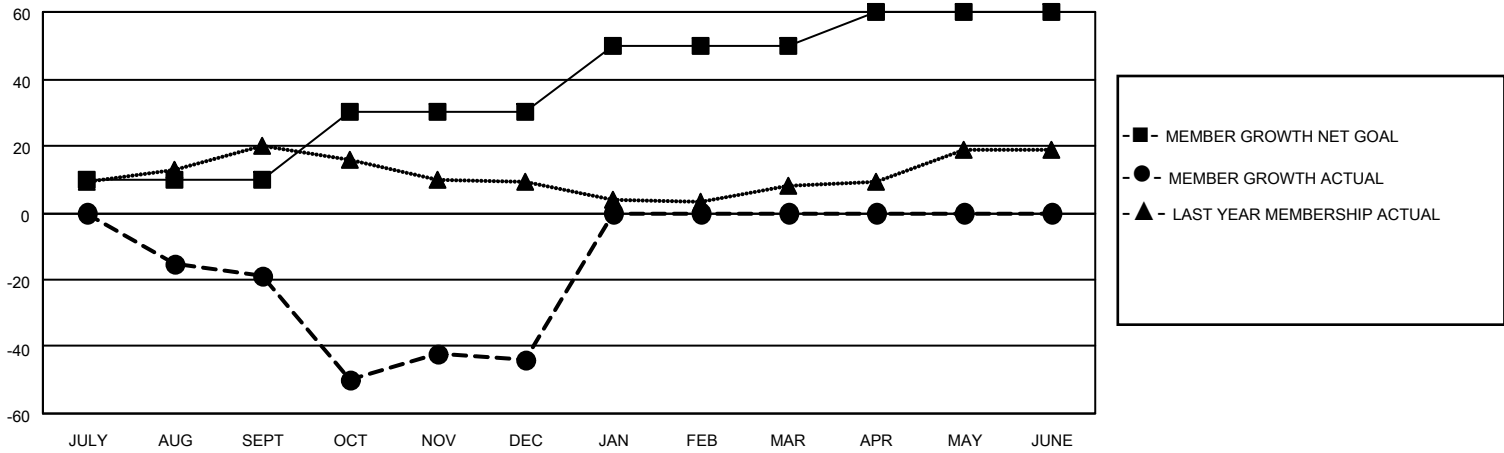
Clubs			
RESULTS FOR 2022-2023			
QUARTER	NEW CLUB GOAL	NEW CLUBS	DROPPED CLUBS
JULY/AUG/SEPT	0	0	0
OCT/NOV/DEC	0	0	1
JAN/FEB/MAR	1	0	0
APR/MAY/JUNE	1	0	0

Members			
RESULTS FOR 2022-2023			
QUARTER	MEMBER GROWTH NET GOAL	MEMBER GROWTH ACTUAL	DROPPED MEMBERS ACTUAL (including transfers)
JULY/AUG/SEPT	10	8	25
OCT/NOV/DEC	20	35	53
JAN/FEB/MAR	20	0	0
APR/MAY/JUNE	10	0	0

GOALS AND ACTUAL NEW CLUBS CUMULATIVE



GOALS AND ACTUAL MEMBERS CUMULATIVE



DROPPED CLUBS: 1

13 CLUBS OF 34 ADDED 1 OR MORE NEW MEMBERS

GENDER DISTRIBUTION

MALE	535 (62.94%)
FEMALE	314 (36.94%)
NON BINARY	0 (0.00%)
PREFER NOT TO ANSWER	1 (0.12%)

DROPPED MEMBERS

[CLICK HERE FOR CUMULATIVE MEMBERSHIP DATA](#)

DECEASED	8
CLUB CANCELLED	0
OTHER	70
TOTAL	78

TOTAL FAMILY UNIT MEMBERS 217

FAMILY MEMBERS PAYING HALF DUES 109